

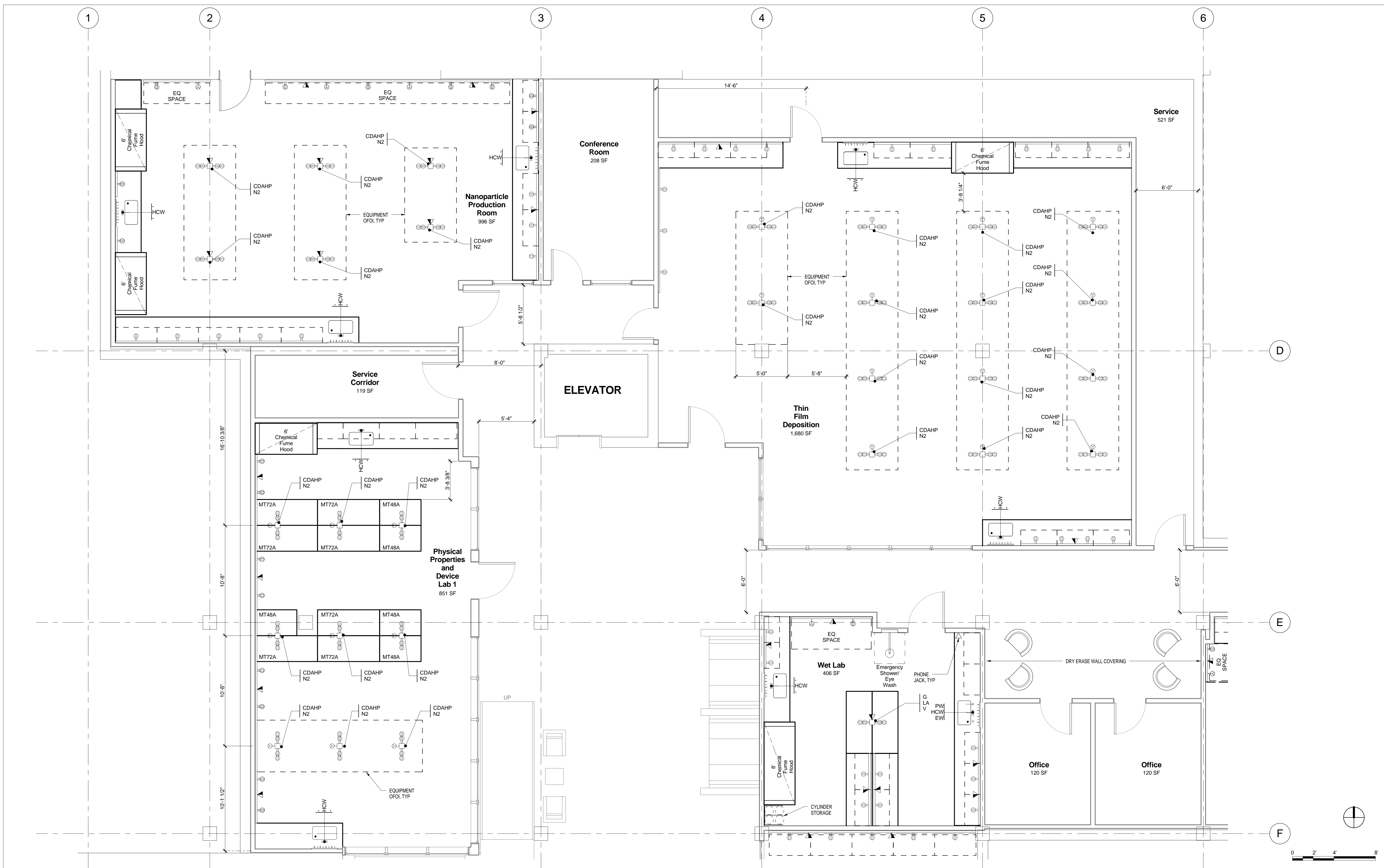
HDR Architecture, Inc. / THA Architecture, Inc.

HDR | 1001 SW 5th Avenue | Suite 1900 | Portland, Oregon 97204 | 503.423.3800
 THA | 733 SW Oak Street | Suite 100 | Portland, Oregon 97205 | 503.227.1254

UO LISB

Lewis Integrative Sciences Building
 Design Development
 December 3, 2009

1.0 - LEVEL 0
 Overall Plan



HDR Architecture, Inc. / THA Architecture, Inc.

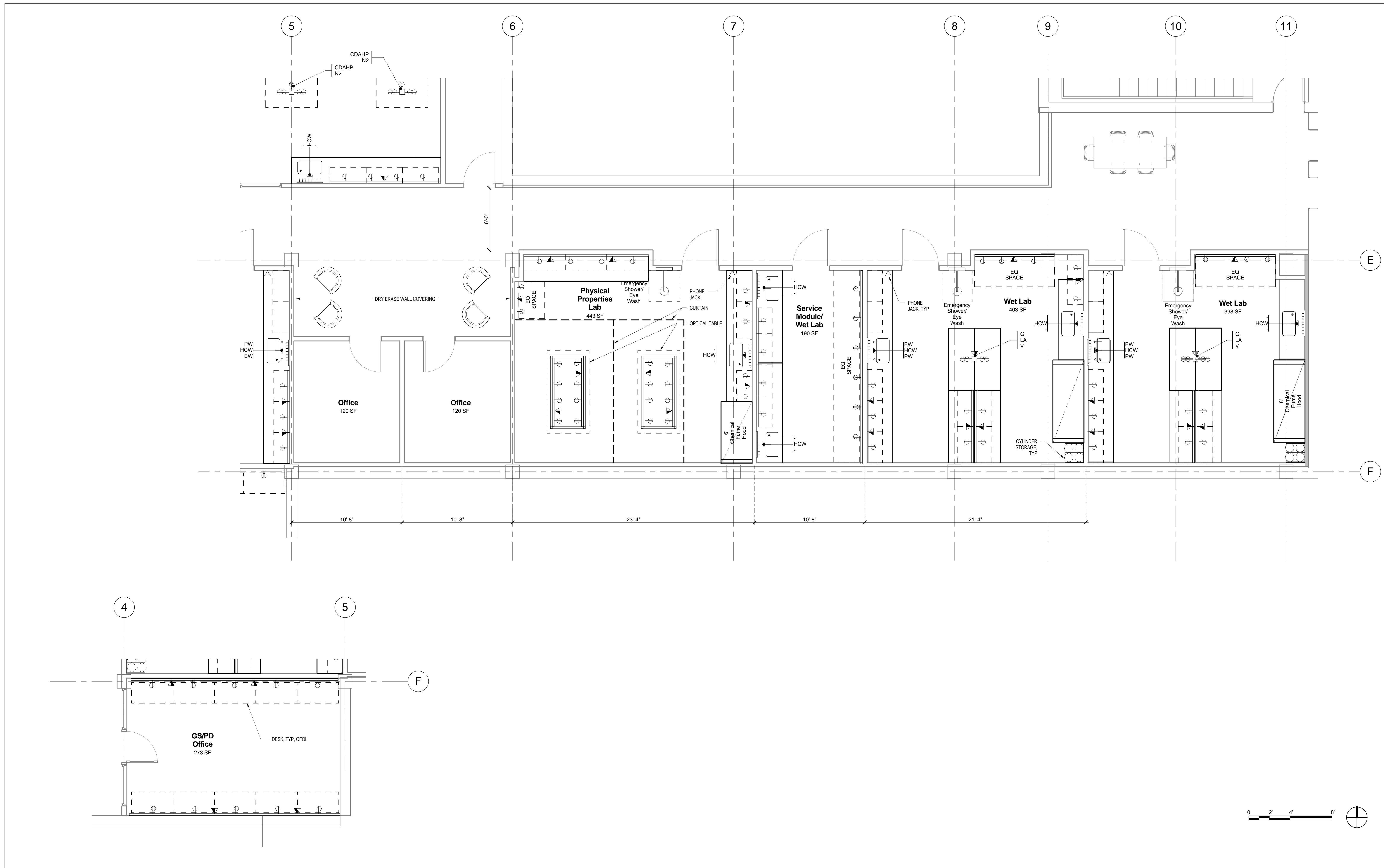
HDR | 1001 SW 5th Avenue | Suite 1900 | Portland, Oregon 97204 | 503.423.3800
 THA | 733 SW Oak Street | Suite 100 | Portland, Oregon 97205 | 503.227.1254

UO LISB
 Lewis Integrative Sciences Building

Design Development
 December 3, 2009

1.0.1

Instrumentation Lab - West



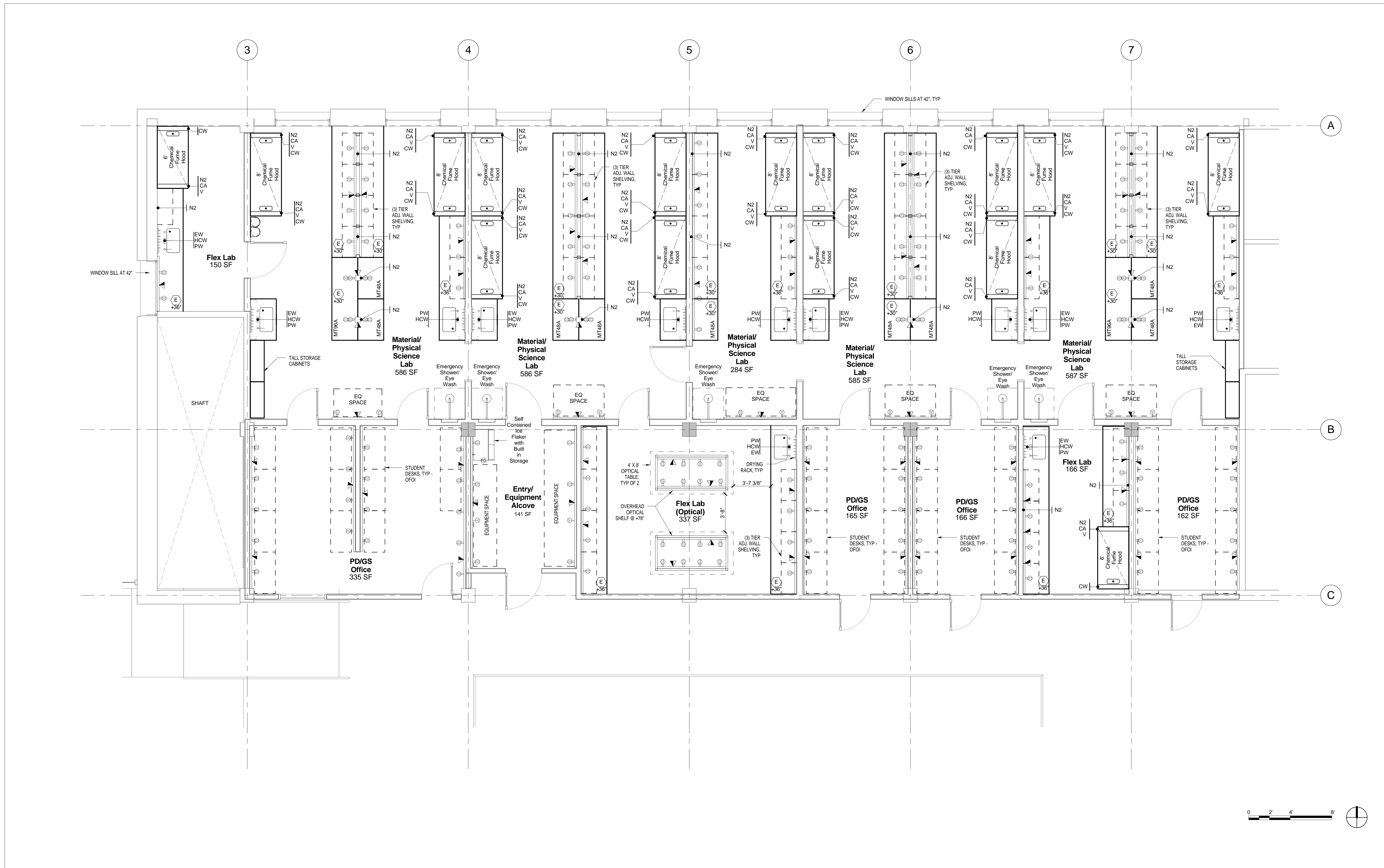
HDR Architecture, Inc. / THA Architecture, Inc.

HDR | 1001 SW 5th Avenue | Suite 1900 | Portland, Oregon 97204 | 503.423.3800
 THA | 733 SW Oak Street | Suite 100 | Portland, Oregon 97205 | 503.227.1254

UO LISB
 Lewis Integrative Sciences Building

Design Development
 December 3, 2009

1.0.2
 Instrumentation Lab - East



HDR Architecture, Inc. / THA Architecture, Inc.

HDR | 1001 SW 5th Avenue | Suite 1900 | Portland, Oregon 97204 | 503.423.3800
 THA | 733 SW Oak Street | Suite 100 | Portland, Oregon 97205 | 503.227.1254

UO LISB
 Lewis Integrative Sciences Building

Design Development
 December 3, 2009

1.4 - LEVEL 4
 Material/Physical Sciences